



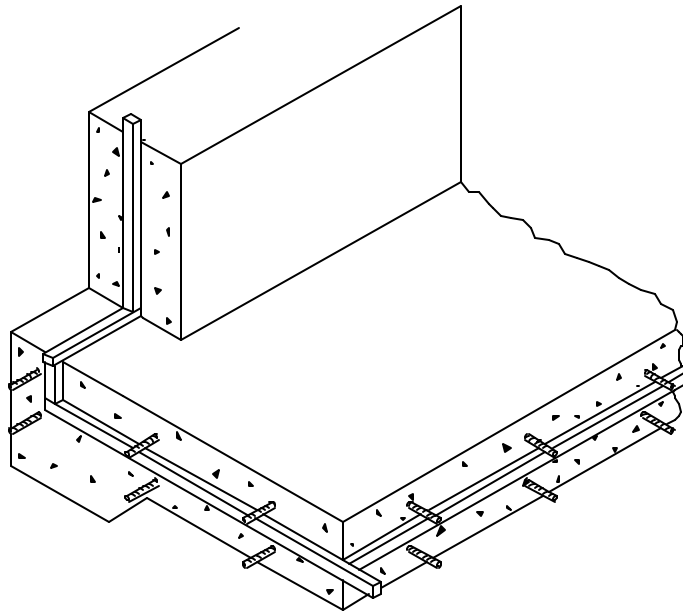
## Installation of LOCKSTOP

### Introduction

LOCKSTOP is a strip applied waterstop used to seal non-moving concrete joints. Comprised of a single component, self sealing mastic, LOCKSTOP bonds to the concrete to create a long lasting seal. LOCKSTOP does not require split formwork, making the installation efficient and simple. LOCKSTOP should be applied to smooth, even surfaces, free of dirt, oil, and laitance for best results. LOCKSTOP is packaged in cartons containing six (6) rolls, each 16'-8" long.

### Forming Requirements

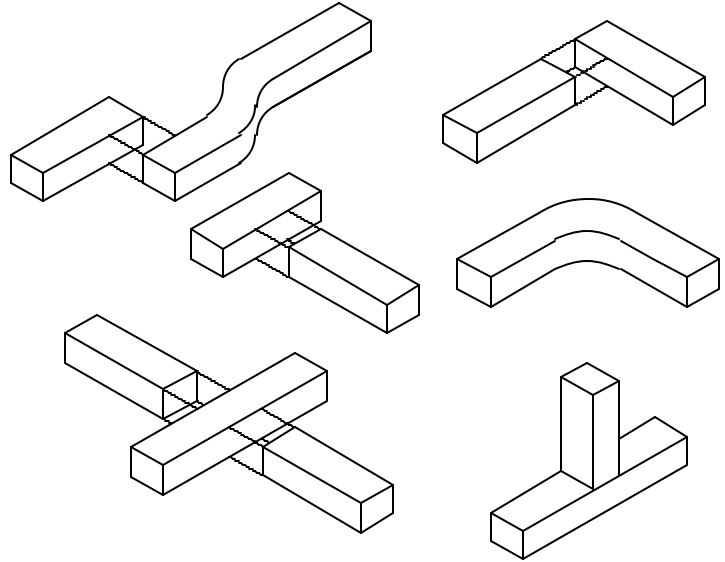
LOCKSTOP is installed after the form is stripped from the first pour and before the second pour is made. Therefore, splitting of the form is not required. The 3/4" x 1" cross sectional profile may be installed in a formed groove of appropriate dimensions or directly to a plain flat concrete surface. The use of a formed groove reduces the chance of the LOCKSTOP shifting and being



displaced when the second concrete pour is made. The non-expansive nature of LOCKSTOP allows installation outside of the reinforcing steel with minimal concrete cover.

## Splicing

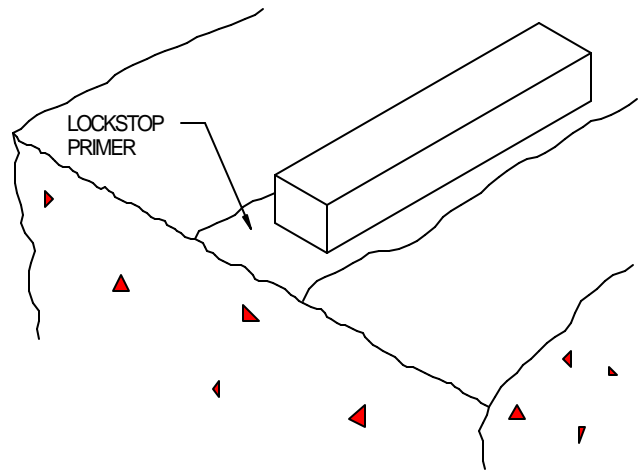
LOCKSTOP should be spliced by lapping approximately 1" of the material side by side. Press the ends together with a molding action until there is no separation or air pockets. Repeat the molding process for intersections and corners. LOCKSTOP may also be bent around corners to avoid splicing.



## Bonding to Concrete

Remove all dust, oil, laitance, etc... from concrete surface prior to adhering LOCKSTOP.

Brush apply one coat of LOCKSTOP PRIMER ADHESIVE two (2) inches wide minimum continuously along the joint. Ensure that the primer is applied wide enough to adhere LOCKSTOP. Allow the primer adhesive to dry for two (2) hours prior to application of the LOCKSTOP. The primer adhesive provides a dust free and tacky surface to improve the adhesion of LOCKSTOP to the concrete. Press waterstop firmly and continuously in place over primed area.



LOCKSTOP can be mechanically fastened to concrete using concrete nails in vertical or overhead applications. Suggested fastener spacing is approximately 12" on center. Mechanical fasteners should only be used in conjunction with the primer adhesive.

## Important Precautions

LOCKSTOP should be used in non-moving joints only. Movement in the joint will diminish the seal and compromise its effectiveness. LOCKSTOP is not appropriate for expansion joint applications.

LOCKSTOP should be applied the same day as the primer adhesive is applied.

Do not remove separation paper from LOCKSTOP until just prior to 2nd pour concrete.

Store material in a cool, dark, dry environment.

**Greenstreak, Inc**

3400 Tree Court Industrial Blvd St. Louis, MO 63122 USA  
Phone 800.325-9504 or 636.225-9400 Fax 800.551-5145 or 636.225-2049